



TF 600XE - "GME-Motion" Basic Light Robot Series

Heavy-duty mast robot lighting systems

Completely remote controlled lighting system for TF 600XE series of masts.

Light Robot's features

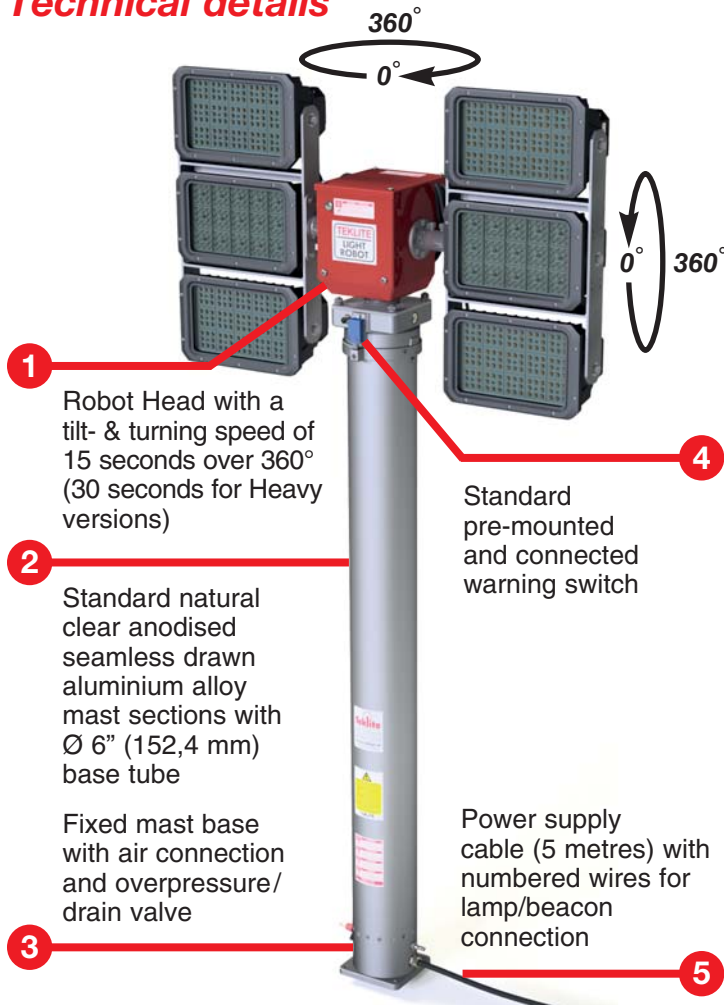
- *Compact construction*
- *Easy to install*
- *Simple to use*
- *Choice of different lamp types*



MOBILE LIGHTING SYSTEMS

Mast specifications

Technical details



Features

- Electric system powered from the 12/24 volt vehicle battery and controlled by cable remote control.
- It is possible to operate the mast robot lighting system with a single or double cable remote control, with or without RF remote control.
- When the operation is over, a simple push of the button "mast down/park" turns the lamps to the stowage position and retracts the mast. This cycle may also be automatically started by the release of the vehicle handbrake.
- Air-operated telescopic mast based on proven TF 600 Series.
- Robot lighting head tilts 360° downwards in only onedirection starting from zero position. The robot head turns also 360° to the right in only one direction starting from zero position, at the touch of a button.
- Lamps can be either 12/24 volt or 110/230 volt if there is a generator on board.
- All Mast Robot Lighting Systems are also available with deadman function for the push button "mast up/raise". Put "DF" after the **control/junction unit cat. no.** for ordering purposes.
- Fire CAN & CAN Open Interfaces available on request.
- The telescopic mast of the mast robot lighting system can be fed either by a TekAir compressor or the air pressure tank of the vehicle.

Cable Remote Control functions



Cable Remote Control-YH

- Unlock button (only on LVG version)
- Extend the mast
- Switch the lighting "on" and "off", left (lights 1) and right (lights 2)
- Beacon switch
- Turn and tilt the lamps in any direction
- Automatic return to the retracted position

Cable Remote Control-LVG



(Optional)
RF Remote Control Kit

Mast mounting

These mast fittings are available for mounting the mast inside or outside the body of the vehicle.

External mounting



Upper Mounting Bracket

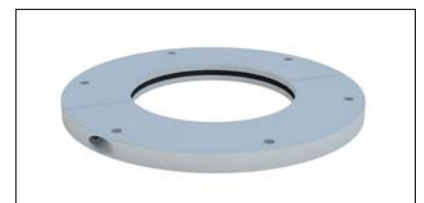
Cat. No. 53095-SG



Lower Mounting Bracket

Cat. No. 53093

Internal mounting



Roof Bearing

Cat. No. 34511-SG

Mast models

Various TF 600XE Series mast models (Class II approved) available on request

* All masts can be equipped with a data cable (Cat 5E/micro coax), suitable for video & audio applications.

Lamp choice

Various lamp units available on request

Model 4 x 300 Watt LED, 110-230V AC, 180.000 Lumen
Cat. No. 52996



Model 6 x 1000 Watt Halogen, 230V AC, 132.000 Lumen
Cat. No. 33445



Beacon Models



Teklite Quadriflash

Model _____ Cat. No. 52262

Available colours:
red, blue, amber and green



LED Beacon

Model _____ Cat. No. 52260

Available colours:
red, blue, amber and green

Air supply for mast extension

The air pressure for mast extension may be provided by a battery powered compressor or from the vehicle air pressure system.

Using the vehicle battery power



“TekAir” Compressor Model 185

Oil-free piston air compressor,
completely maintenance-free.

Models with NO valve

Model 185, 12 volt	Cat. No. 33658
Model 185, 24 volt	Cat. No. 33659
Model 185, 230 volt (12 volt system)	Cat. No. 34010
Model 185, 230 volt (24 volt system)	Cat. No. 34011

Using the vehicle air pressure system



Air Pressure Regulator Unit

Combined unit consisting of valves,
manometer, pressure switch and
pressure regulator.

Models

APR Unit, 12 volt	Cat. No. 25578
APR Unit, 24 volt	Cat. No. 25579



Air Pressure Valve Kit

Kit consisting of loose valves,
manometer and pressure regulator.

Models

APV Kit, 12 volt	Cat. No. 27838
APV Kit, 24 volt	Cat. No. 27839

Note : For more air supply options see the TekAir leaflet.

Mast lighting robot with Control/Junction unit & Remote controls



Robot Head “GME-Motion” Basic

Model (Standard) Cat. No. 52716-6
Weight: 13,0 kg - Wind surface: 0,05 m² - Ø20 axle

Model (Heavy) Cat. No. 52717-6
Weight: 14,3 kg - Wind surface: 0,05 m² - Ø30 axle



Control/Junction Unit “GME-Motion”

Model 12/24V Cat. No. 52711



Cable Remote Control-YH

Cat. No. 38682 (Spanish)

Cat. No. 38683 (English)

Cat. No. 38684 (German)

1,5 metre spiral cable + 10 metres linear cable



Cable Remote Control-LVG

Cat. No. 35992

1,25 metre spiral cable + 10 metres linear cable
(Optional up to 6 light buttons)



RF Remote Control Kit

Cat. No. 36002 (Optional)

Kit contents: - RF Remote control
- 230 Volt charger
- 12/24 Volt car charger

(Optional up to 6 light buttons)

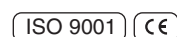


All details given in this publication are approximate
and may be subject to change without notice.

TEKSAM COMPANY NV, Woudstraat 21, 3600 Genk, Belgium

Tel : +32 (0)89 38 44 72 Fax : +32 (0)89 38 61 41 E-mail : info@teksamco.com Website : www.teklite.com

TEKLITE is a division of Teksam Company NV



MOBILE LIGHTING SYSTEMS